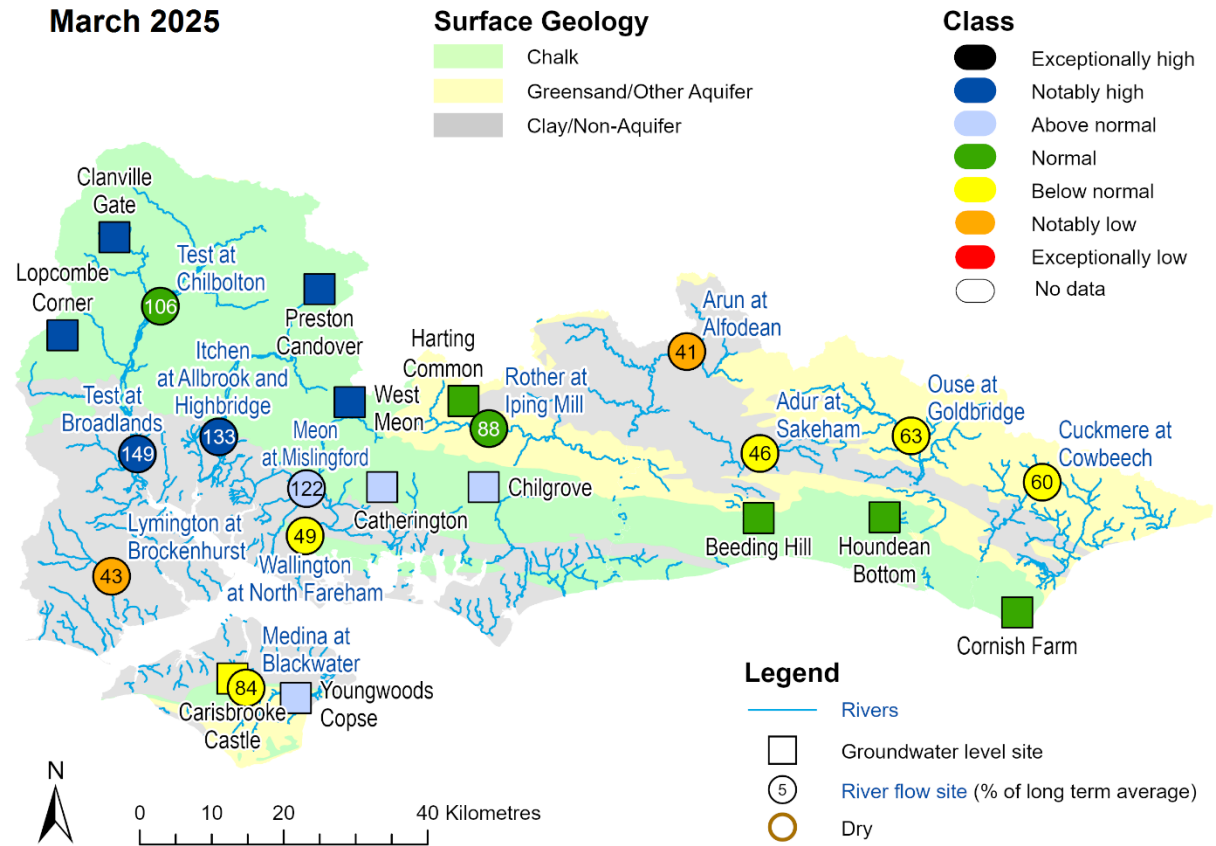
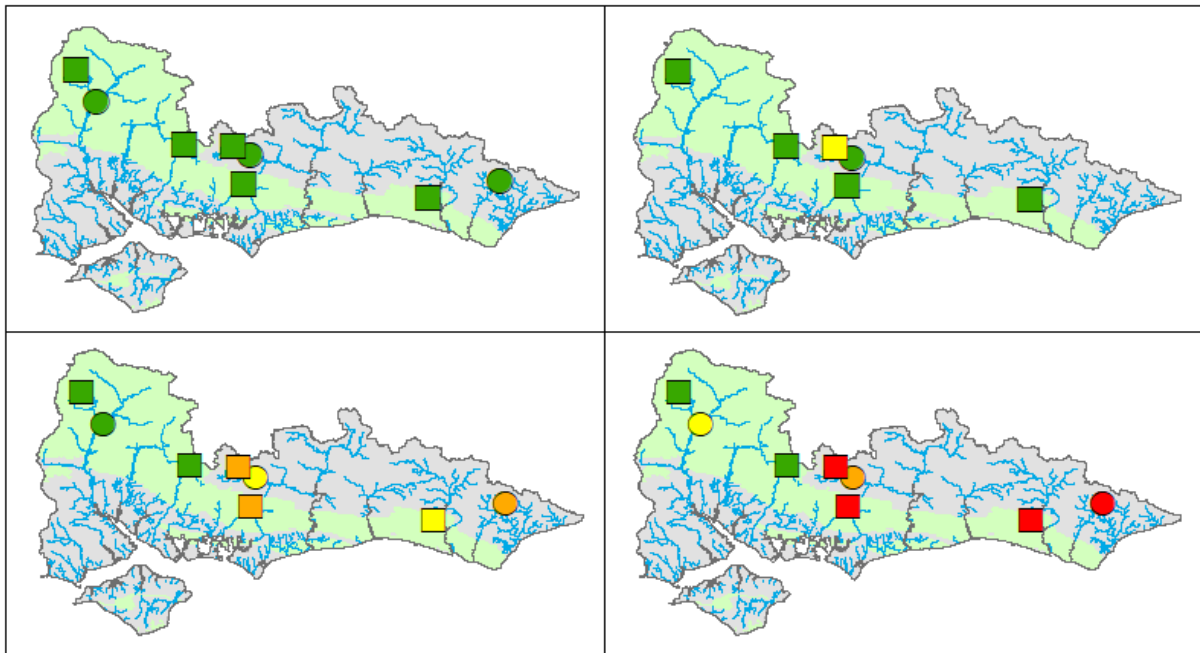


FORWARD LOOK- RIVER FLOW AND GROUNDWATER – SEPTEMBER 2025

Monthly mean river flow and groundwater levels – current month



Scenario Projections - September



Projected river flows at key indicator sites up until the end of September 2025.
 Projected groundwater levels at key indicator sites at the end of September 2025.
 Projections based on four scenarios: 120% (a), 100% (b), 80% (c) and 60% (d) of long term average rainfall (Source: Environment Agency). Geological map reproduced with kind permission from UK Groundwater Forum BGS © NERC Crown copyright. All rights reserved.
 Environment Agency 100026380 2025.